

# Contents

- 01 Essential Points
- 01 Introduction
- 01 The Matrix
- 02 Colors and Sizes
- 02 Purchasing
- 02 Inventory Adjustments
- 03 Updating the Master
- 03 Importing

## Essential Points

- Size-color combinations of a common style can be related to each other using the Size-Color Matrix
- The Matrix is created in the Master, which is not an actual Product, but represents the common style for the combination Products
- Size-color combinations are called Child Products, and are created using the Size-Color Matrix in the Master Product
- Sizes and Colors can be saved as sets that will auto-populate the Matrix when selected
- The Matrix Master Product can be used to purchase or adjust inventory using a grid
- Size-color Child Products cannot be imported and still maintain their relationship to a Master

## Introduction

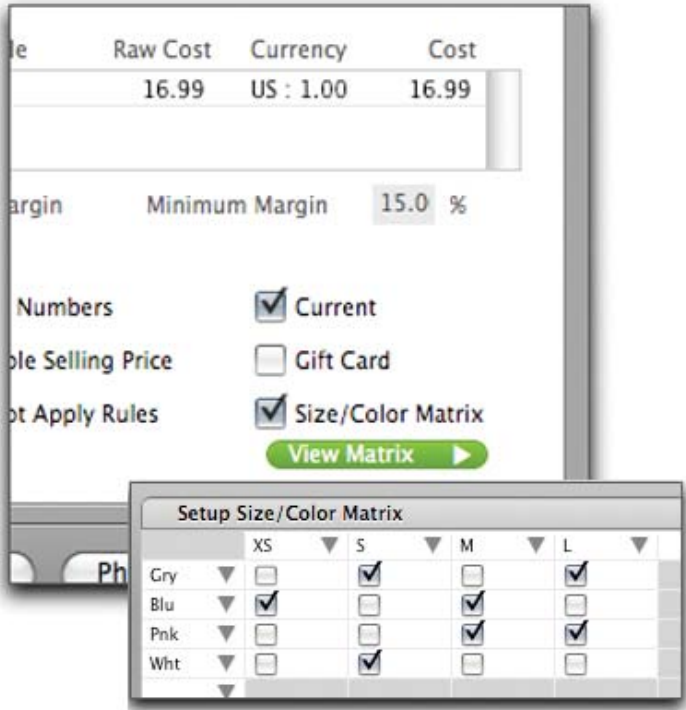
The ability to bind together Products that vary only in size or color is essential for the purchasing and maintenance of apparel for boutiques.

## The Matrix

The Size-Color Matrix is found in the Product card, and can be activated using the *Size-Color Matrix* checkbox in the *Info* tab of the Product card. Using this checkbox and creating Products on the matrix designates this Product as the **Master Product**.

**The Master Product is not an actual Product**, rather it represents what all the **Child Products** (the combinations) have in common. Child Products created from a Master Product all have their own separate Product card, but when created will have pre-populated the attributes the Master Product had when they were created, including Family, Class, Costs, and Selling Price. The Master Product is not to be deleted, nor should it contain any inventory.

If you sell Products that differ only in size or color, you are able to use this feature to create a large number of multiple Products easily. When you check the *Size-Color Matrix* checkbox, a grid will appear



Size-Color Matrix in Product Card

which allows you to enter various sizes and colors for the Product. The list of sizes can be created at **Tools > Setup > Size**, and the list of colors can be created at **Tools > Setup > Color**. Clicking *Save* will create checkboxes for each combination.

### Colors and Sizes

To access your sizes and colors in the matrix, you must first populate them in their respective setup panels, located in the *Tools* menu. Once you've added them to the lists, you can create sets that you can call up in the matrix to quickly populate the row and column headings.

To save a size or color set, go to *Size Sets* or *Color Sets* in the Setup option of the Tools menu, click *New*, and choose the sizes you want to save in a set. Name the set and click *Save*. This set will now be accessible using the *Color Sets* and *Size Sets* buttons at the bottom of the matrix. Choose the set you wish to use to populate the headings. Click *Save*.

Next, check the boxes for which you wish to create new Products, and click *Create Products*. New Products will now be added to the Product database, duplicating all the Product info from the original Product, and each will have a unique Product Code and description. Formatting for these modifications can be done using the pull-down menus below the matrix.

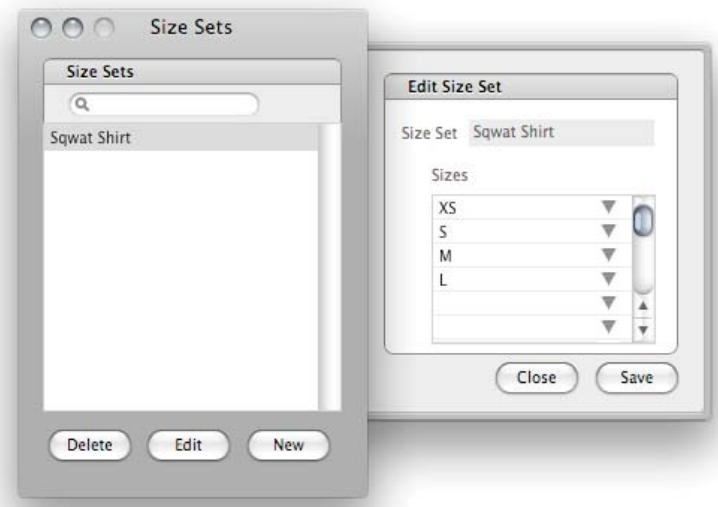
### Purchasing

If the Master Product is added to a Purchase Order, the matrix will appear and you can enter the quantities you wish to order for each combination directly in the matrix.

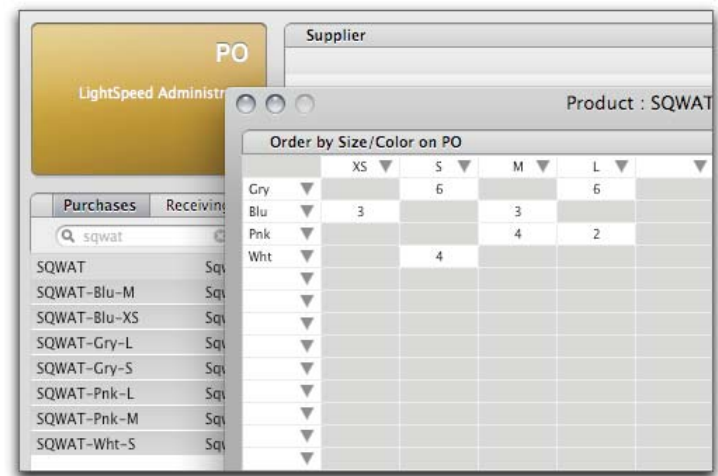
Once you click *Save* and close the matrix window, the combination Products will be added to the PO, and the Master Product will not be there. When the Products arrive, they must be received individually.

### Inventory Adjustments

Inventory adjustments for Child Products can be done on the matrix as well. To access it, click the *Inventory* tab of the Master Product, and click the *Adjust* button. In the resulting *Adjust Inventory* window, click the *Adjust Inventory by Matrix* button, and enter the values for each combination Product. Click *Save*. The inventory levels for each Child Product will now be changed.



Saving a Size Set



Entering quantities to be ordered via the Matrix

However, the recommended method for adjusting any Product's inventory levels is to add the Product to a Purchase Order and "receive" the size-color Child Products into inventory, using the method outlined above. Receiving Products to adjust their levels, rather than doing manual adjustments, is the preferred method owing to a more accurate balance of accounting exports.

## Updating the Master

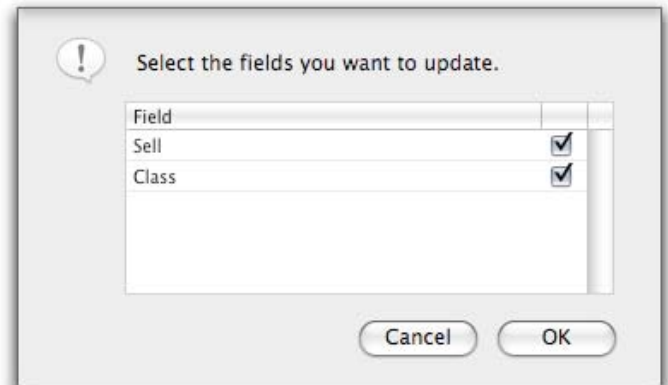
When you save adjustments to the Matrix Master Product, you will be asked if you want these changes adjusted on the Child Products as well, with a checklist of items you want adjusted.



**Master Matrix Products cannot be deleted.**

## Importing

Size-color Child Products **cannot** be imported, because they will lose the relationship they have with each other and to the Master Matrix Product. They must be created within LightSpeed, using the method outlined in this document, for a proper relationship to be established between the Master and the Child Products.



*Master Matrix Adjustment Dialog*