

Contents

- 05 Installing: Server
- 06 Installing: Client
- 06 Upgrading: Server
- 06 Upgrading: Client

The first installation of LightSpeed is a quick and simple process that will let you jump right into the configuration of your settings. Xsilva will initially send you an email with your license information, as well as the LightSpeed installer. In fact, this installer will install two applications on your computer: LightSpeed, also known as the Client application, and OpenBase, the Server application. OpenBase is the application which houses all the data you enter into LightSpeed, and is only installed on one machine per location. LightSpeed and OpenBase can be installed on the same computer. However, LightSpeed can be installed on several different “client” computers, each one accessing the central “server” computer. For more information on setting up your network, please see the *Networking* help document on our website’s documentation page.

Installing: Server

- 1 Download the installer file, and double-click the file to mount the disk.
- 2 Double-click the *Install LightSpeed* icon.
- 3 Follow through the OS X prompts, and enter your OS X admin password when asked. (next page)



Installer window

- 4 Enter the LightSpeed and OpenBase license keys you were sent by email. Be sure to copy and paste, rather than re-type, to minimize the likelihood of error.
- 5 The LightSpeed log-in should appear. If you are on the server machine, click Servers and confirm that either 127.0.0.1 or "localhost" is chosen as the IP, shown in the *Server Address* field. Enter "lightspeed" as the User Name, and "admin" as the Password.

Installing: Client

In fact, there is no "installation" required for configuring client computers to run LightSpeed, as it will be accessing the central server computer.

- 1 Drag the LightSpeed icon to the Applications folder of your hard drive.
- 2 Double-click the LightSpeed icon to launch LightSpeed.
- 3 Click the Servers button and enter the local host name or IP address of the server computer, and log in.

Upgrading: Server

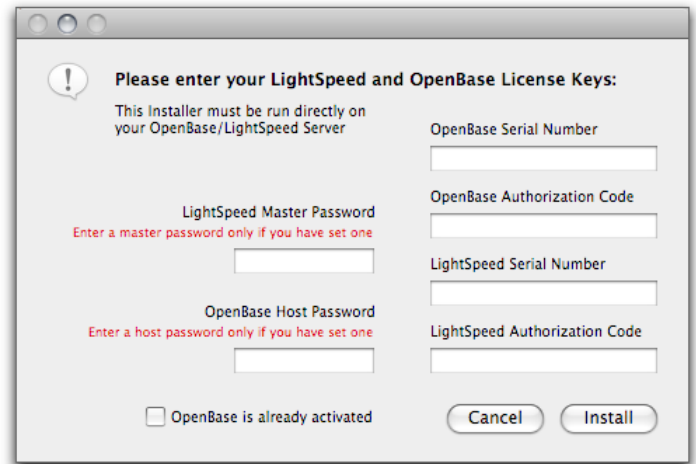
For major version updates, it may be required to download the LightSpeed Server Update. If you are unsure, please contact Xsilva's support department.

- 1 Go to www.xsilva.com/downloads.php, and download the *LightSpeed 2.X Server Update*.
- 2 Double-click the *LightSpeed Server Update* file, and follow the installation procedures. You will be prompted to restart the server.

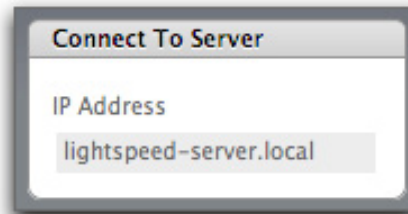
Upgrading: Client

Updating your version of LightSpeed is a one-click process, with the *Check for Updates* feature accessible right in LightSpeed.

- 1 In the LightSpeed menu bar, go to **LightSpeed >Check for Updates**. LightSpeed will use your internet connection to check if there are any updated versions of LightSpeed available. If there are, the newer version will automatically begin downloading to your computer. If you are logging in as the Administrator, however, LightSpeed will notify you automatically if there are any updates available upon log-in.



License Key window



Connect to Server window



Once you log in with this new version of the LightSpeed client, your server will automatically be upgraded, and you will no longer be able to log in with older versions of LightSpeed. It is a good idea to back up before any upgrades are done to your LightSpeed installation. Please see the help document *Backing Up* for more information.

- 2 Log in with the new version of LightSpeed to automatically upgrade your database, and delete any old versions of LightSpeed you still have. Remember, once you have logged in with the new version, no older version can be used to log in.
- 3 Repeat Step 2 on any client computer you wish to upgrade.



The *Check for Updates* feature is only available in LightSpeed 2.6.1 or later. If you have an earlier version, download the newest version of LightSpeed directly from our downloads page, at **www.lightspeed.com/downloads.php**.

If there is a gap of several versions between your current version and the latest version of LightSpeed, you may require an interim version for your upgrade. Please contact Xsilva if you are unsure.